



IF-Pakistan working towards socio-economic & environmental resilience of smallholder sugarcane farmers

**WF-Pakistan's Food & Markets
programme;**

Since 2004;

**providing economically efficient ecological farming
solutions and technologies to mitigate the
environmental footprints of input-intensive
commodities**

**farmers' capacity building
stakeholders Engagement
supply Chain Development**

Geographical Overview;





Since 2010;

Water Cotton Initiative;

Water Cotton Farmers' Support Programme

Over 250,000 Farmers

A close-up photograph of several white cotton bolls on a green plant stem. The bolls are fluffy and white, with some showing the brown seed pods. The background is a soft-focus green, suggesting a field of cotton plants.

Since 2005; WWF-IKEA Partnership

ate Smart Agriculture,

er Stewardship

forestry & Biodiversity Conservation,

der Empowerment & Livelihood Improvement

on Value Chain Development

art Agriculture

ver 100,000 Farming Families

6; Exploring New Horizons

es ———
oundation

Promotion of Organic Cotton

Product

Over 20,000 Farmers



50,000 certified organic cotton farms

100,000 acres under organic cotton

production by **2020**



Food & Markets Programme;

1 Director

Coordinators/ Sr. PO

(Master's degree in Agriculture)
(18 years of education)

5 Female Field Trainers

(Agriculture graduates)

70 Female Field Facilitators



7 Managers

+80 Project Officers

(Master in Agriculture)

+35 Male Field Trainers

(Agriculture graduates)

+50 Male Field Facilitators

(Diploma in Agriculture)

Approx. annual budget PKR 1000 million

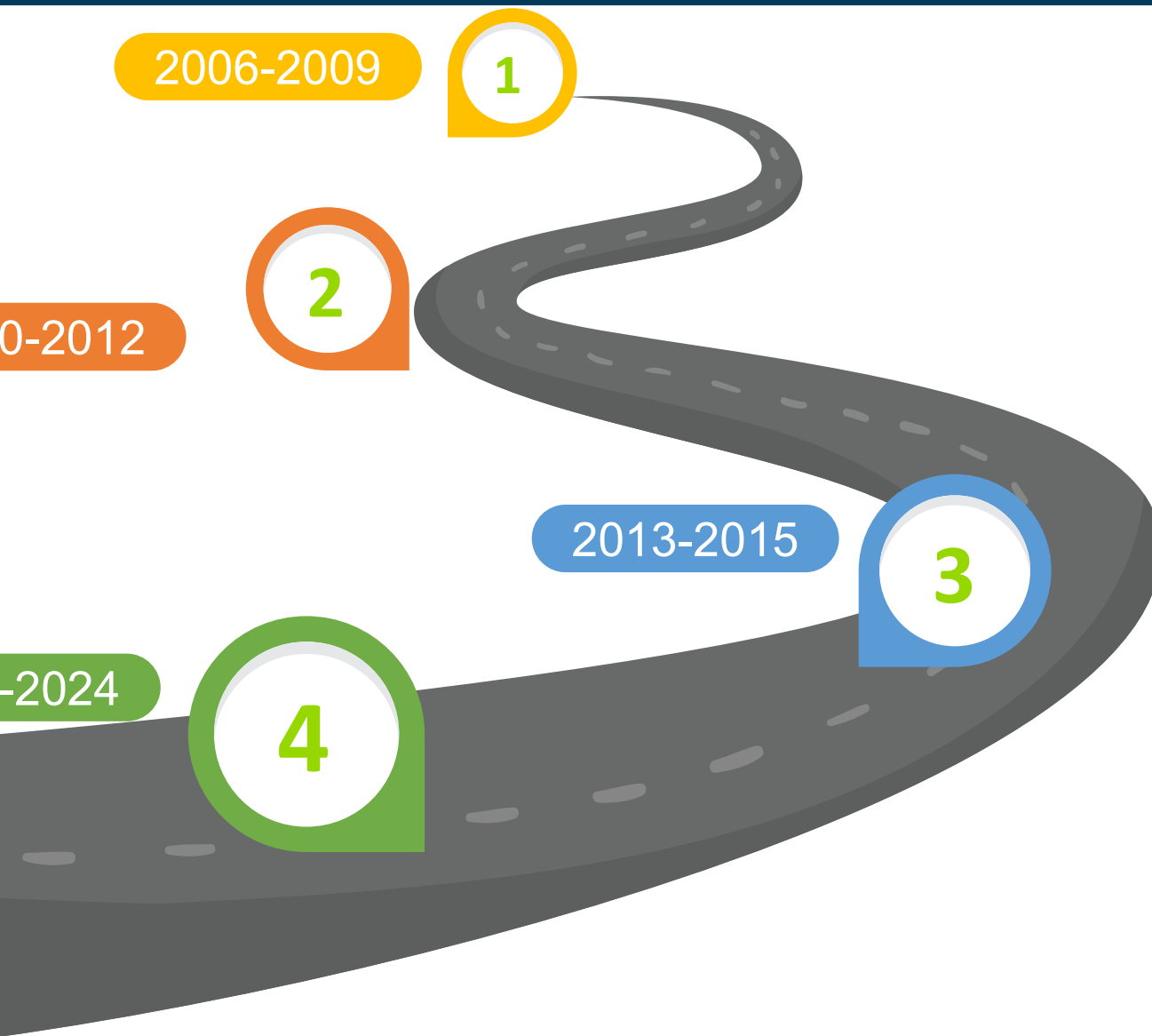
IFAD-Pakistan's Sugarcane Journey;

Since 2006;

IFAD-Pakistan has
worked on projects
involving sugarcane
producers and millers to
make sugar production
more sustainable through
the adoption of
sustainable practices.



WF-Pakistan's Sugarcane Journey;



2006-2009

Water Thirsty Crops funded by E
Union

2010-2012

Farmer Support Programme
Sugarcane Improvement
funded by Solidaridad

2013-2015

Farmer Support Programme
Sugarcane Improvement
funded by Solidaridad

2022-2024

Promoting Sustainable Su
Production among Smallholder
of Pakistan funded by the B
Impact Fund (BIF)

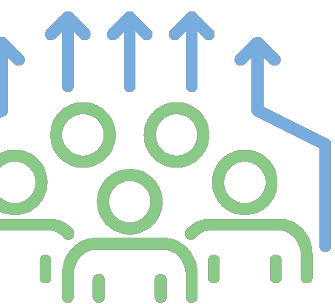


**Over 10,000 Sugarcane
Farmers**

20,000 Hectares

**ined to adopt sustainable practices to reduce the
environmental, economic, and social impacts of sugarcane
production.**

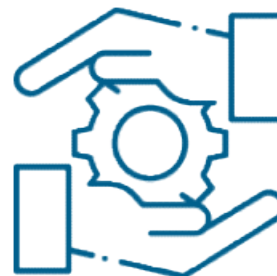
What we do;



Develop farmers' expertise



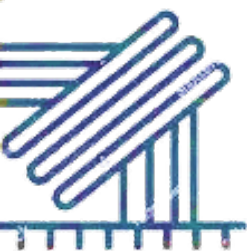
Demonstrate nature-based solutions



Strengthen decision support system



Link sugarcane producers & processors



Create demand pull



Support for adoption of global sustainability standards



Connect stakeholders



Support policy framework

Impacts;



01

16.45

%
reduction in
irrigation
costs

19.15%

reduction in
synthetic
fertilizer costs



02



03

21.53

%
reduction in
pesticide costs

14.32%

reduction in total
crop input costs



04



05

17.8

%
increase in
profit



022-
024;

Promoting sustainable sugarcane production among smallholder farmers of Pakistan

Brief Partnership;



BONSUCRO
Project funded by
Bonsucro Impact Fund



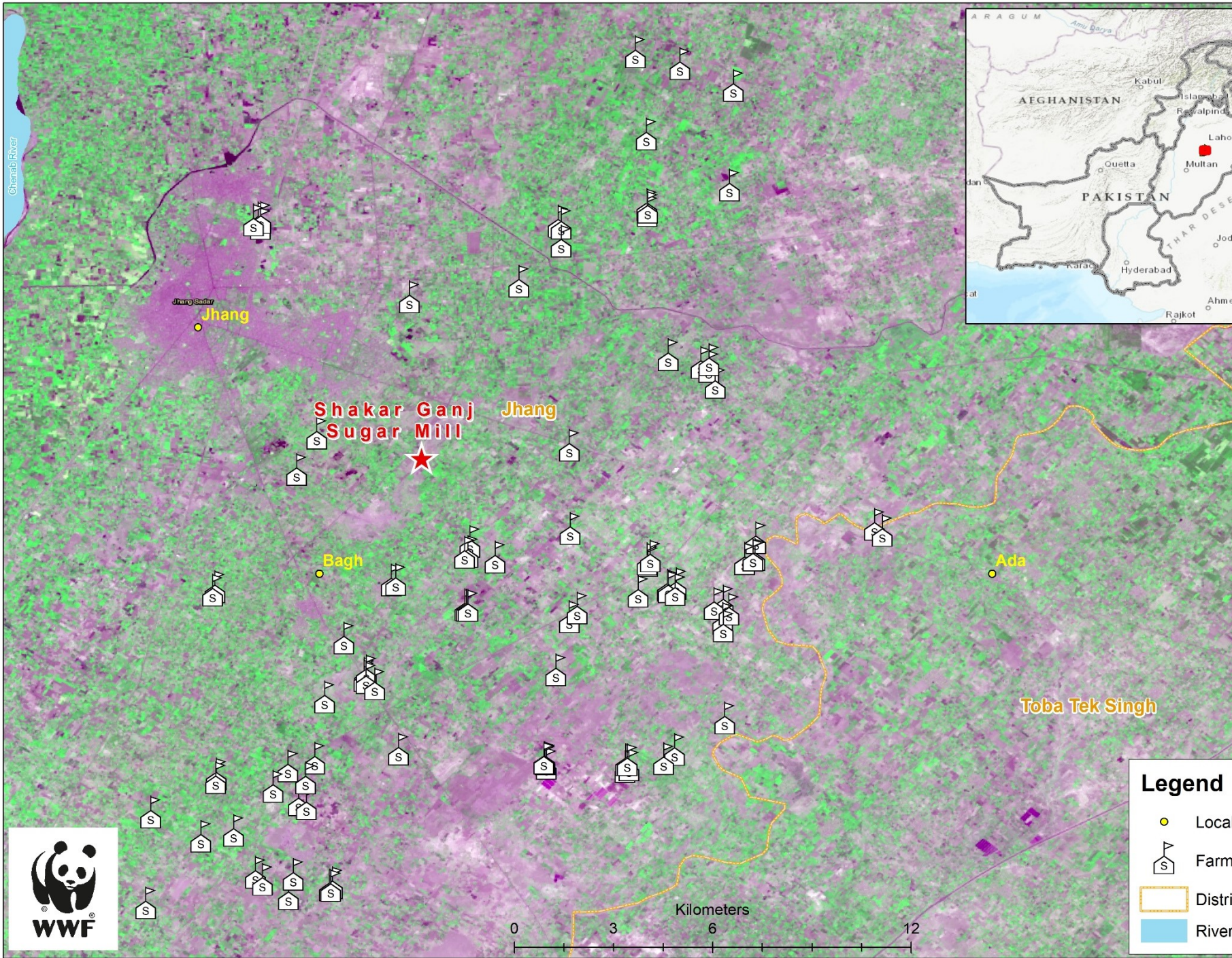
WWF-Pakistan
Implementing on-
ground interventions

IMPACT PROJECT
**Sustainable sugarcane in
Pakistan: Building smallholders'
capacity**



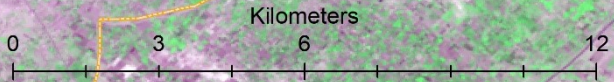
**Shakarganj
Limited**
Supporting
implementation project
activities





Legend

- Localities
- Farms
- District boundary
- River



Project Overview;

farmers' Capacity building;
empowering smallholding farmers on
climate-smart practices to
effectively respond to the
climate change consequences.

1000 farmers
1000 hectares

Capacity on Bonsucro
Production Principles.



Project Overview;

Support research activities in collaboration with Shakarganj Sugarcane Research Institute (SSRI)

Establish business links between smallholding farmers and mill, to create a symbiotic relationship through which smallholders get the right price while the mill can procure sustainably produced



Project Overview;

Train farm & mill workers on recent work measures and workplace safety, to create a better working environment for workers to feel safe at work

Training sessions for the Agriculture Extension & Markarganj staff on Consucro Production standards



WHAT IS BONSUCRO?

Bonsucro is the leading global sustainability platform and standard for sugarcane.

Our purpose is to collectively accelerate the sustainable production and uses of sugarcane.





Mills

BON SUCRO
The global sugarcane platform

A global community across the sugarcane supply chain

Growers

Refiners

NGOs

Traders

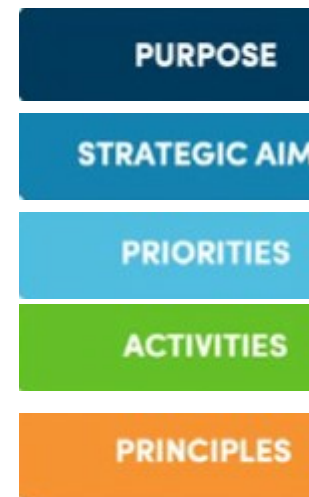
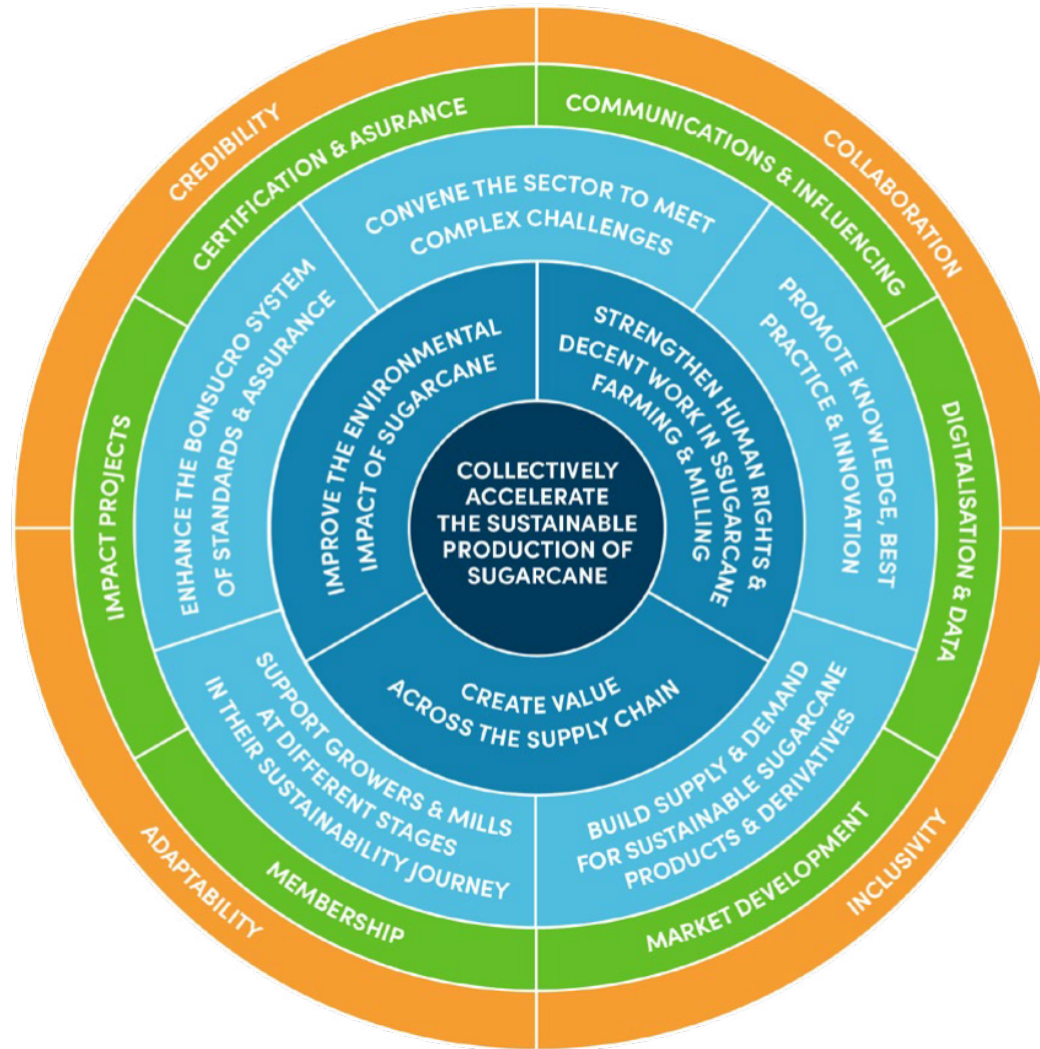
End users



Bonsucro's strategic aims for 2021-26



Bonsucro acts as a catalyst for market transformation, driving the production and uptake of sustainable sugarcane – across sugar, ethanol, biorefineries, and other value chains.



What we do;



Standards & assurance



Assist farms and mills with sustainability



Offer digital tools for use



Invest in infrastructure projects



Market development



Support members through regional teams



Collect and analyse data



Drive collection action

Why a credible global standard, like Bonsucro, is important

Sustainability can only be achieved by working across the supply chain to align concepts, practices and values. This happens through...



A clear global performance framework

Reaching across the value chain
Clear and agreed concepts
Common principles and strategies



A strong assurance system

With wide metrics and indicators
Allows compare and measure the performance of producers
Provides a global system for evaluation



Developing expertise to face challenges

Focusing on the regions and issues that matter for sustainability



BONSUCRO'S REACH AND IMPACT

Bonsucro Worldwide

**Americas
out Brazil**
 Certified mills: **34**
 Members: **85**
 Chain of
 Custody certificates

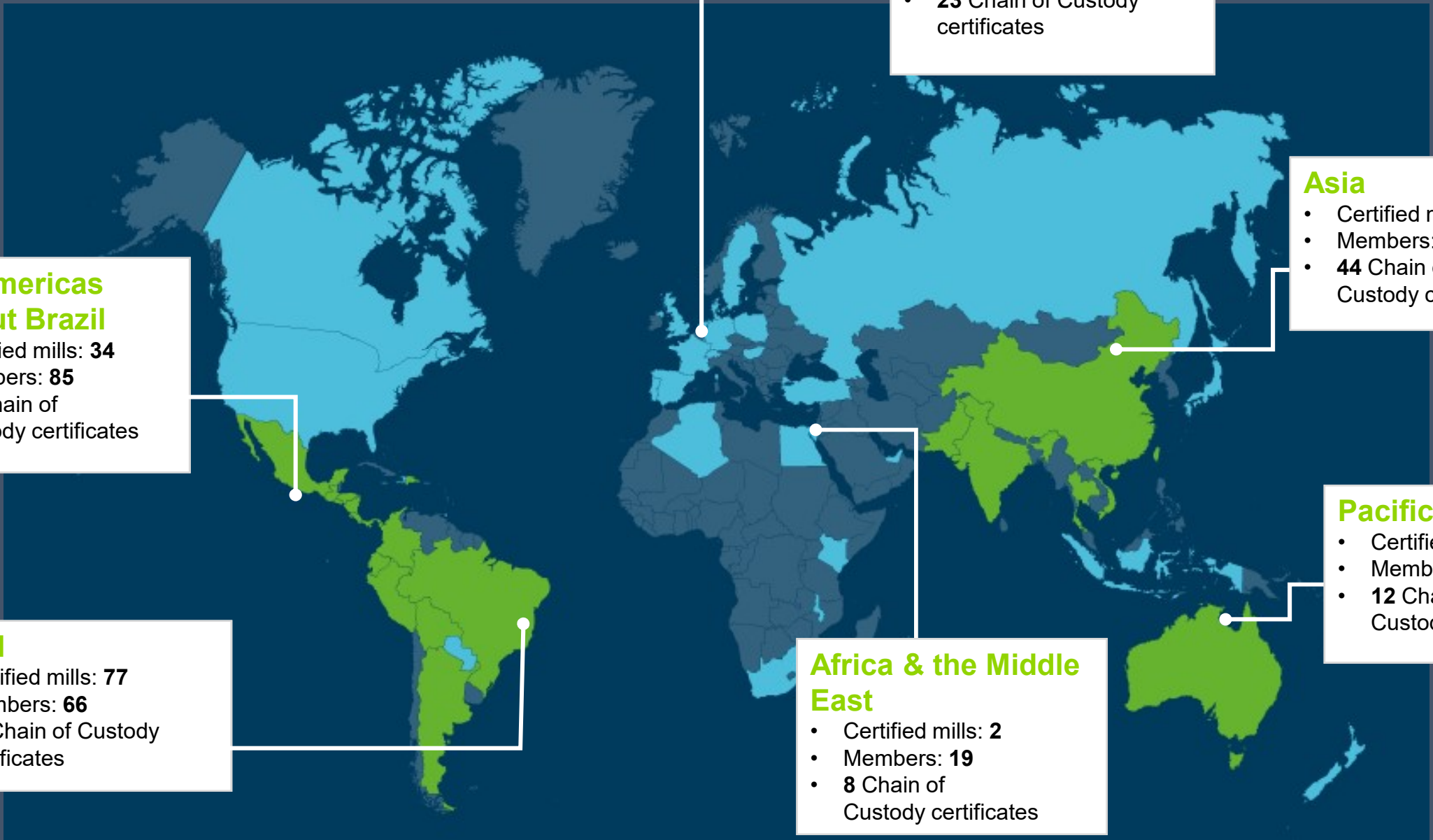
Brazil
 Certified mills: **77**
 Members: **66**
 Chain of Custody
 certificates

Europe
 • Members: **43**
 • **23** Chain of Custody
 certificates

Asia
 • Certified mills
 • Members: **67**
 • **44** Chain of
 Custody cert

Pacific
 • Certified m
 • Members
 • **12** Chain
 Custody c

**Africa & the Middle
East**
 • Certified mills: **2**
 • Members: **19**
 • **8** Chain of
 Custody certificates



Market uptake

Graph 10: Certified Sugar - Trade Volumes



2.11m
tonnes of
certified
sugarcane
traded in 2020

+3.4%
compared to
2019



Impact data published in 2022*

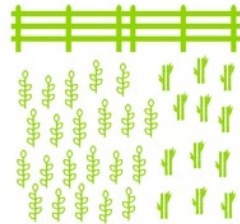


Data submitted by certified entities through the Bonsucro Calculator for the 2020-21 sugarcane season



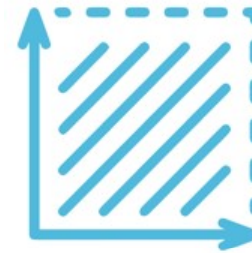
8.2 MILLION TONNES OF SUGAR

were produced in line with the Bonsucro Production Standard which prohibits the use of harmful chemicals



1,504,302

hectares of land are certified against Bonsucro Standards



Compared to
390,000
ADDITIONAL HECTARES

of land now have improved environmental management

Number of
sugarcane farmers
certified against
Bonsucro Standards
rose to

59



66,781

workers in certified mills had access to sufficient safe drinking water during their shifts



On average, certified producers reduce their water consumption by

53%

after five years of certification



182,800

workers in sugarcane production and processing worldwide are covered by health and safety plans and have access to

Greenhouse gas emissions

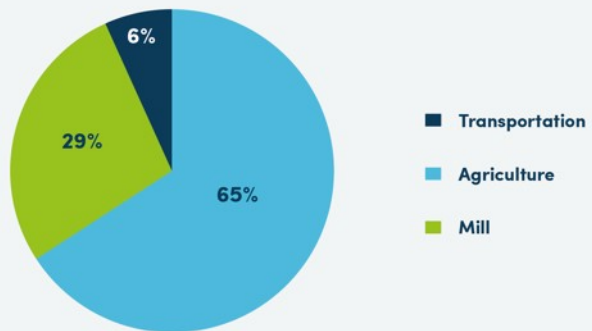


Clear reduction trends are seen in **fertiliser use**, **electricity use** and **cane burning**.

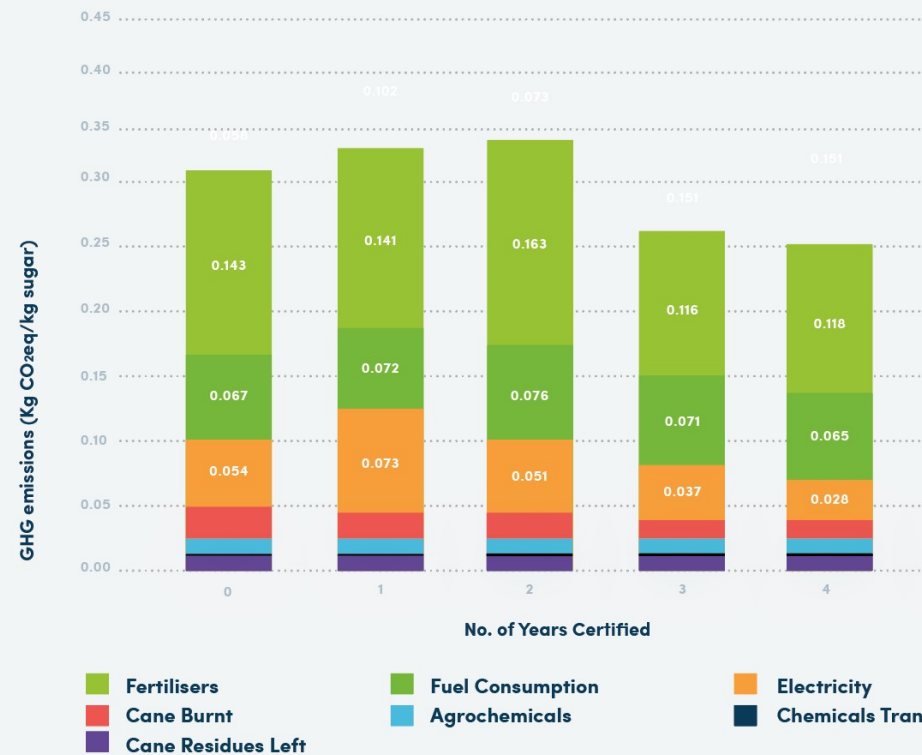
6% reduction in GHG emissions in the first year of certification.

16% reduction after 5 years

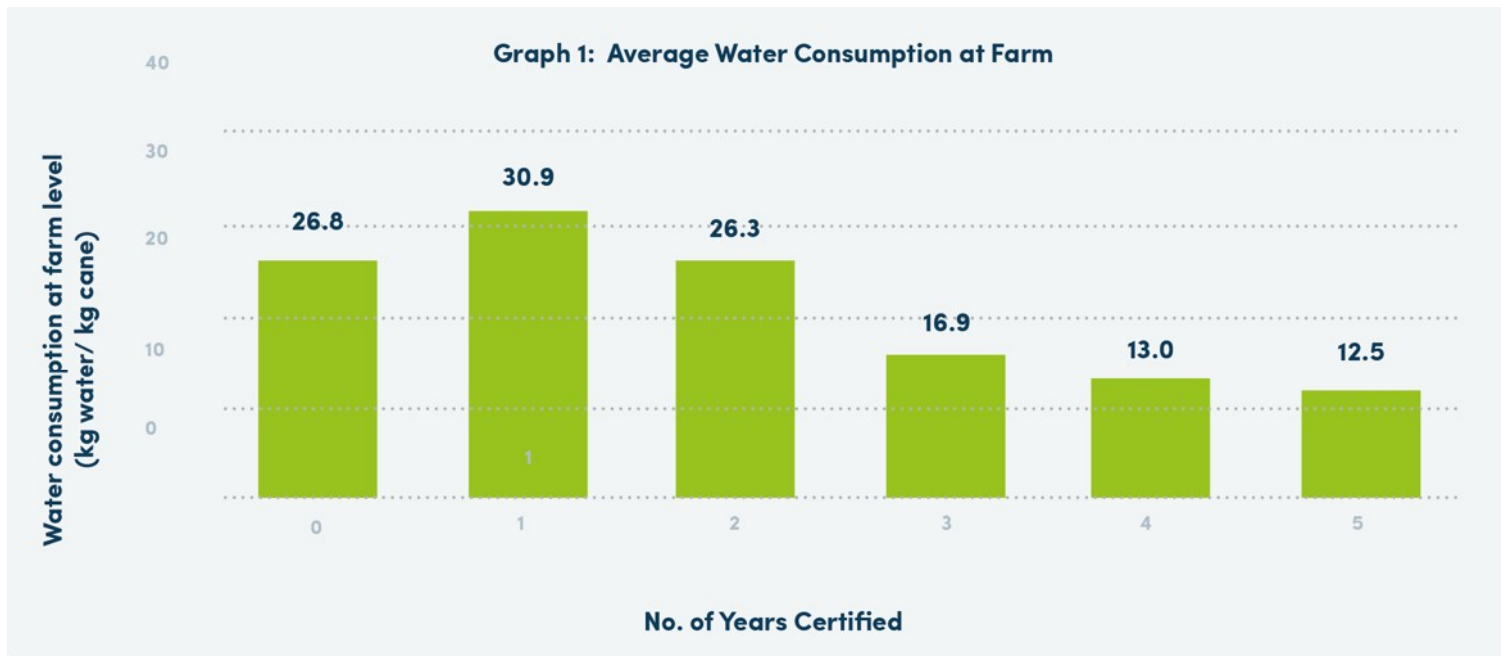
Graph 2: % GHG emissions by source at Bonsucro certified farms and mills



Graph 3: Greenhouse gas emissions after consecutive years of certification



Water use



Water consumption decreases **by 53%** after 5 years of certification.

Clear trend of reduced water consumption per kilogram of cane produced over time.

Challenges to upscale Bonsucro in Pakistan;

Demand-pull

Connection with global sugar players/brands

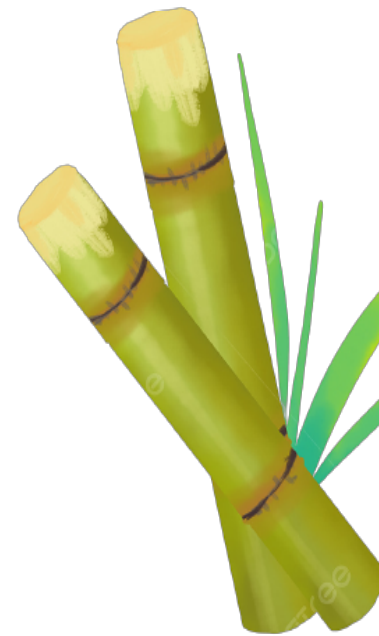
Global level visibility of local businesses that are interested to work on sustainability

Lack of expertise to adopt sustainability standards

Policy level support

Lack of interest of local sugar businesses/producers to adopt sustainability standards

Lack of coordination between supply chain players



Way Forward;

Creating demand pull for sustainable
touring

Developing expertise to adopt
sustainability standards

Stakeholders' coordination (public &
private)

Influencing policies (Financing, trade &
national)

Engaging the local corporate sector to
come forward





©

®

WWF

together possible™